

# Satellite Monitor CT

2024/03



我们的愿景是致力于成为清洁能源技术与服务平台，为家庭用户提供可持续的电力供应。

We envision being a Clean EnergyTech platform that sustains communities and families.

# 目录

# Content

---

**01/ Concepts**

**02/ Features**

**03/ Interfaces**

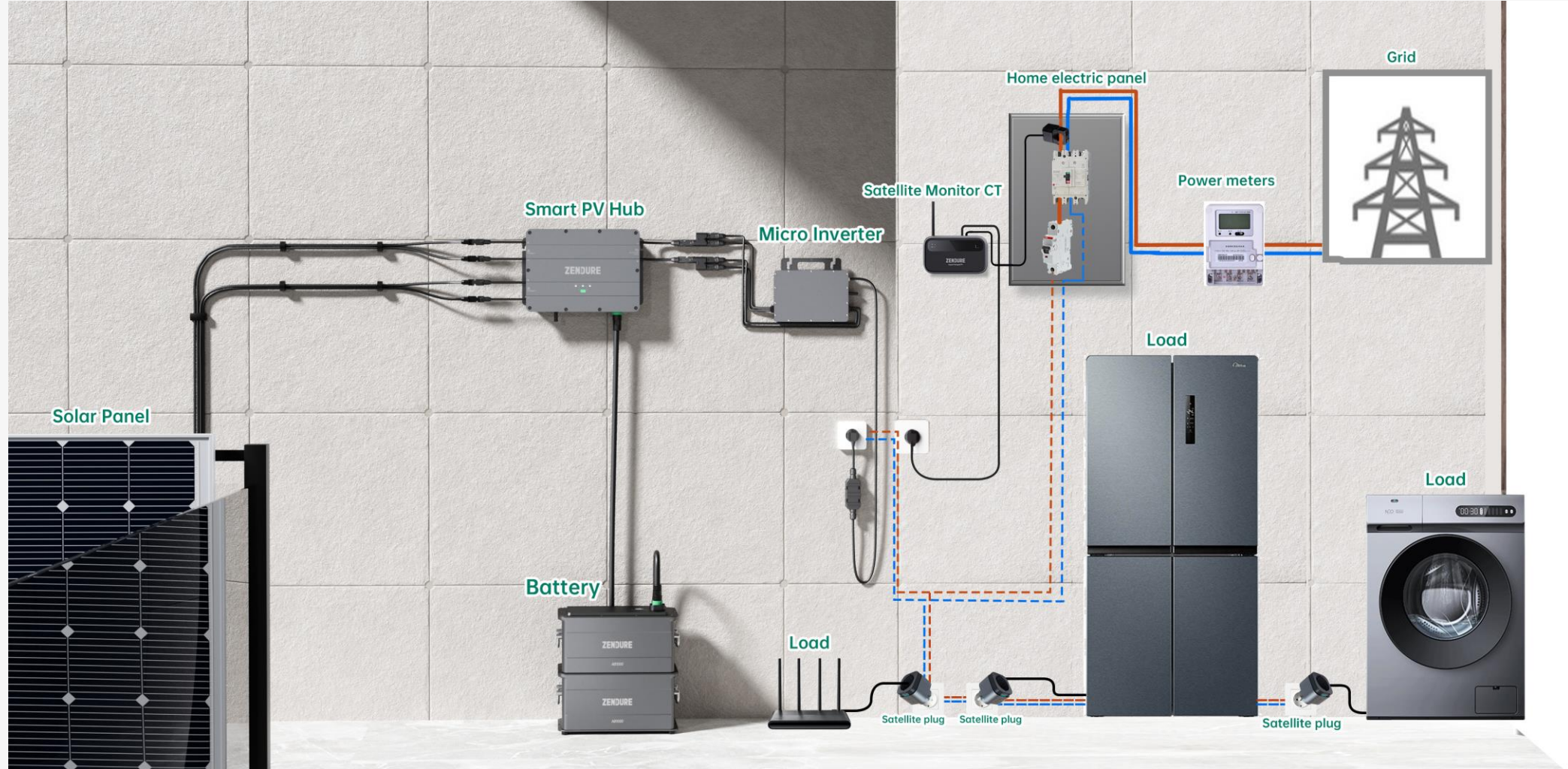
**04/ Quick Installation Guide**

# Concepts

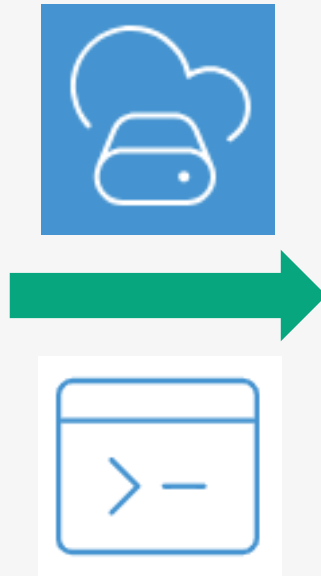


- The **Zendure Satellite Monitor CT (Current Transformer)** is an IoT-powered energy meter.
- It allows you to simultaneously monitor the consumption of any household appliance single-phase electrical equipment (such as lighting, power lines, security systems, heating, cooling, etc.) in single-phase electrical systems.
- It is perfect for monitoring household consumption, as well as tracking how much energy is produced and controlling SolarFlow output to the home grid.

# Concepts



# Features



- Real-time monitoring of single-phase circuit power consumption.
- Scheduled communication with SolarFlow for cloud-based data exchange.
- Maximizing prevention of energy backflow to the public grid.
- It automatically adjusts the performance of the SolarFlow system to ensure that every minute of solar energy in your home is used optimally\*.

\*During peak demand, your household energy needs will be prioritized; During times of lower demand, it intelligently stores excess energy so that it is available when you need it.

# Features



## IoT powered

Connected via Bluetooth or WiFi network.



## Save what you produced

Set custom scenarios to maximize the prevention of energy backflow to the public grid\*.

\*Needs to work with Zendure SolarFlow products.



## Energy monitoring

Real-time monitoring power consumption of single-phase electrical circuit.



## Optimize your solar energy flow

You can choose the solar energy to power your household electricity in priority or store it for use at night.



## Cloud-based data storage

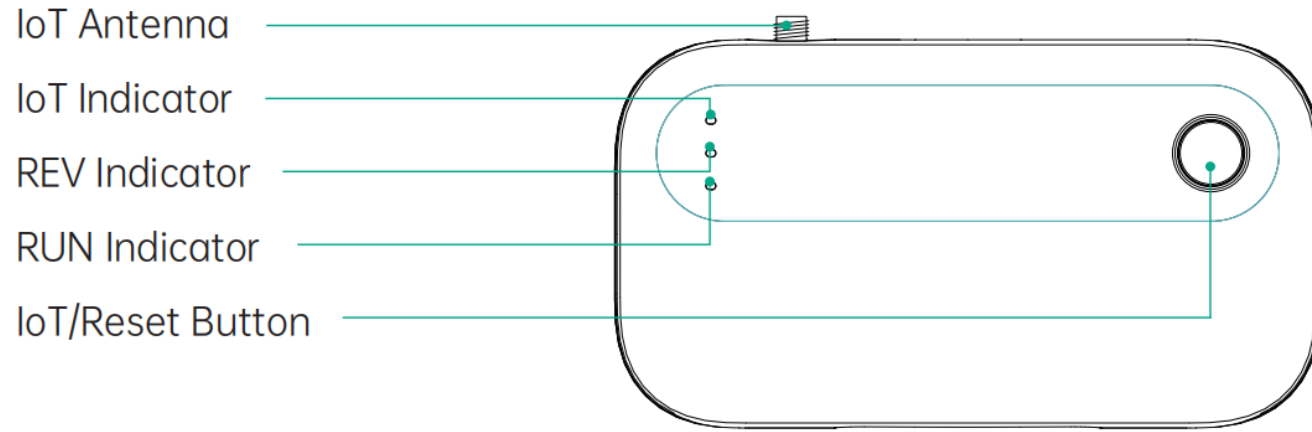
Data is stored in a free cloud, and you can check the historical energy consumption graph at any time.



## Accuracy class 1

A measurement accuracy of 1%.

# Interfaces



IoT Antenna

IoT Indicator

REV Indicator

RUN Indicator

IoT/Reset Button

**1. IoT Antenna**

**2. IoT Indicator**

The green light flashes while pairing and will stay lit when the device is paired.

**3. REV Indicator**

Indicates reverse power to grid.

**4. RUN Indicator**

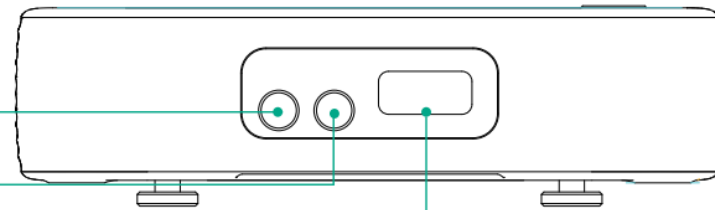
**5. IoT/Reset Button**

Press the button for 3 seconds to pair and connect to a Wi-Fi network, press and hold for 10 seconds to factory reset.

CT1 Input

CT2 Input

AC Power Input



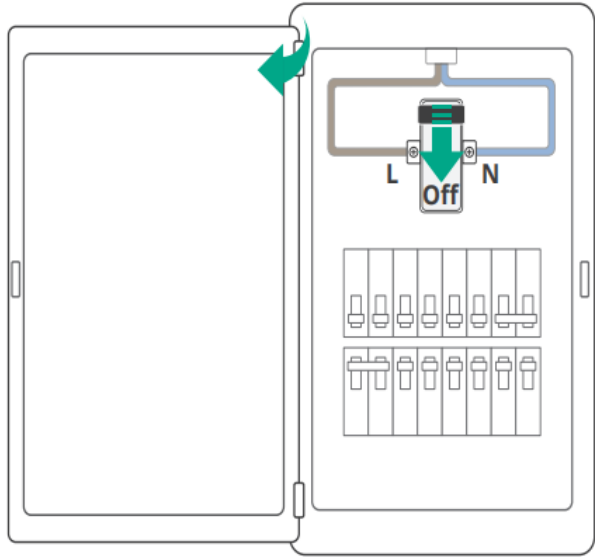
**6. CT1 Input**

**7. CT2 Input**

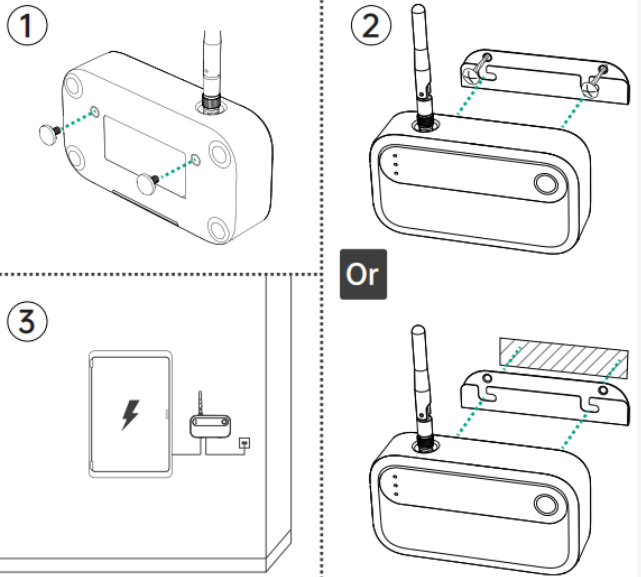
**8. AC Power Input**

# Quick Installation Guide

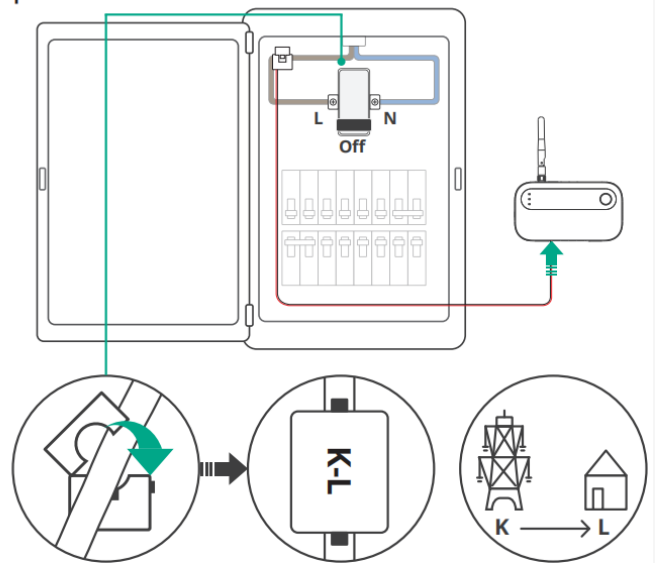
Step 1



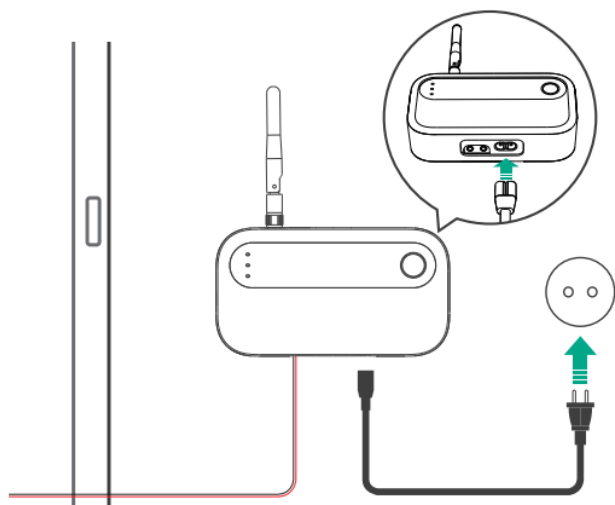
Step 2



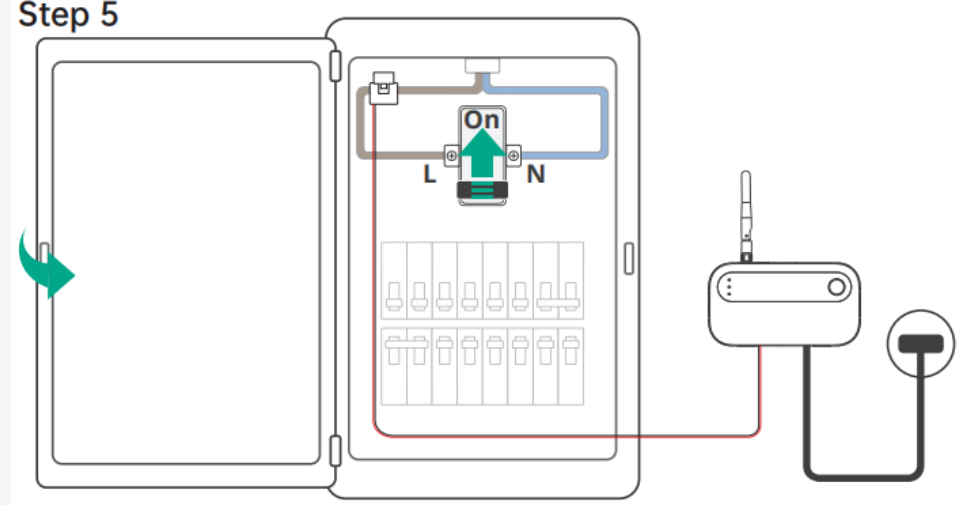
Step 3



Step 4



Step 5



Step 6





# Product Spec

## Satellite Monitor CT



Intelligent Regulation  
with SolarFlow



Realtime Monitoring

Name	Satellite Monitor CT
Model	ZDSMCT
Power Supply	100 ~ 240VAC ±10%
Frequency	50/60Hz
Consumption	< 1.1w
Max Measurement Per Channel	150A
Protection Level	IP44
Operating Temperature	-20°C~70°C (-4°F~158°F)
Storage Temperature	-40°C~85°C(-40°F~185°F)
Operating Humidity (RH)	5%~ 95%
Height of the altitude	0 - 3,000M
Wireless Type	Bluetooth, Wi-Fi

### Dimensions and Weight

Dimensions	140 x 35 x 77 mm (5.51" x 1.38" x 3.03")
Weight	0.181 kg (0.4 lbs)



Monitor



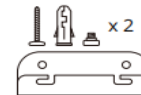
150A CT x1



AC Power Cable



IoT Antenna



Mounting kit



Installation  
Manual

# ZENDURE

SuperCharged 

**求真 | 靠谱 | 可持续**

Truth and Integrity | Accountability and Responsibility | Energy Consciousness

**THE END**

Thank You

✉ Support: [support@zendure.com](mailto:support@zendure.com)

✉ PR & Influencer: [pr@zendure.com](mailto:pr@zendure.com)

✉ Distributors: [sales@zendure.com](mailto:sales@zendure.com)